

San Leandro Unified School District



2009-2010 Unaudited Actuals

Song Chin-Bendib
Assistant Superintendent of Business Services
September 14, 2010

San Leandro Unified School Board Trustee



Mike Katz-Lacabe, President

Lisa Hague, Vice President

Hermy B. Almonte, Clerk

Pauline Cutter, Trustee

Diana J. Prola, Trustee

Morgan Mack-Rose , Trustee

Carmen M. Sullivan , Trustee

ADMINISTRATION

Cindy Cathey, Superintendent

Debbie Wong, Assistant Superintendent of Education Services

Song Chin-Bendib, Assistant Superintendent of Business Services

John Thompson, Assistant Superintendent of Human Resources

Unaudited Actuals is based on the reliability of timely and accurate information. This document represents the time and efforts of the total Business Office. These individuals deserve special recognition for their work, dedication and professional talents.

Madeline Gabel, Director of Business Services

Marites Fermin, Accounting Manager

Thea Chhay, Budget & Attendance

Dorothy Morgan-Carney, Billing & Accounting

Karen Perez, Benefits

Gail Abbate, Payroll

Jennilee Ngor, Payroll

Elizabeth Cardoso, Bond Technician

Juanita Oyola, Buyer

Marie Rivera, Purchasing

Vonalee Tageson, Accounts Payable

Teresa Zumbo, Community Services & Accounts Payable

Sukhi Khaira, Administrative Support

Mission Statement



The mission of the San Leandro Unified School District is to educate students to achieve and demonstrate academic excellence and become confident, collaborative and competitive in a global society, by utilizing state-of-the-art technologies and innovative teaching strategies within a well-maintained, secure learning environment, in a region rich in heritage and diverse in culture, where we value our traditions while welcoming change.

2009-2010

GENERAL FUND

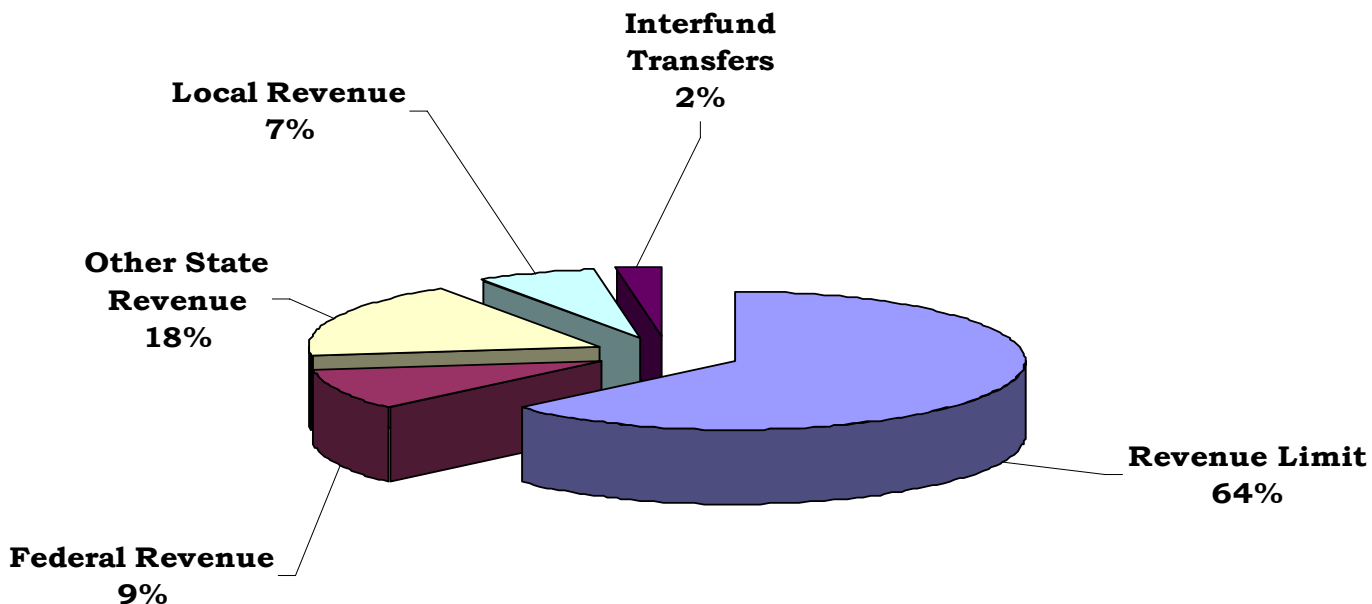
UNRESTRICTED OVERVIEW

(Page 5 of Unaudited Actuals Packet)

Net Increase (Decrease) In Fund Balance			\$ 1,806,781
Tier III Ending Balance			(1,547,905)
			\$ 258,876
Beginning Balance UGF			3,731,018
			\$ 3,989,894
Revolving Cash			(40,000)
Stores Inventory			(29,920)
Noon Supervisors (Crossing Guard)			(16,396)
Special Ed MAA District			(60,037)
Special Ed MAA - STAFF			(32,871)
Adult Ed/Deferred Maintenance Sweeps for 10-11			(1,243,000)
Site Discretionary			(67,694)
Legal Fees			(280,832)
Undesignated Amount			\$ 2,219,144

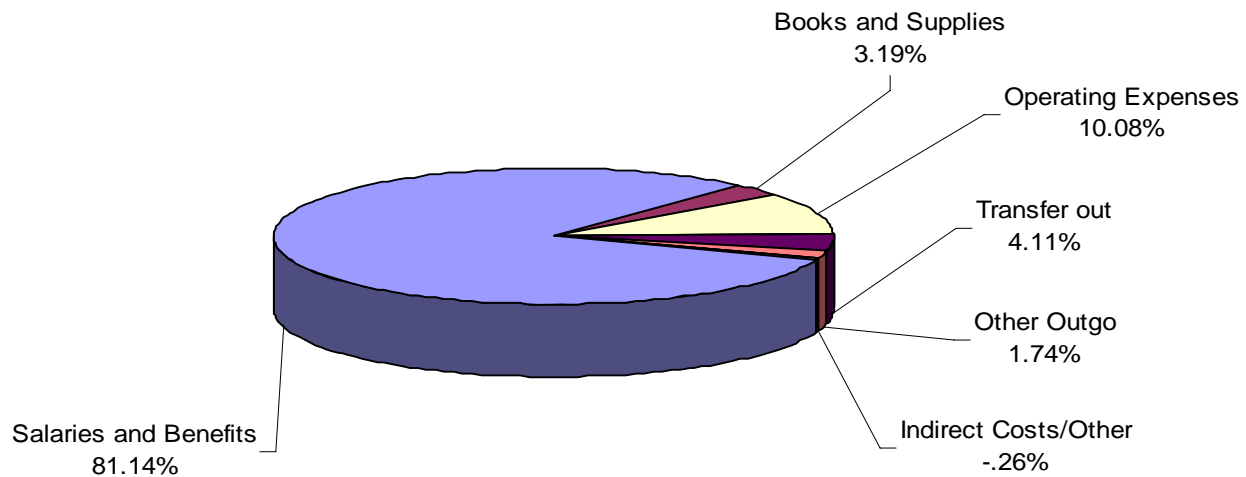
The District's total combined General Fund revenue for 2009-2010 is 67,232,811. The majority of the District's combined General Fund Revenue is generated through the District's Revenue Limit is 64%. The next largest source is Other State Revenue at 18%. Both of these sources are determined by State funding and together they account for 82% of the General Fund Revenue. Federal, Local Revenue and Other Interfund Transfer, make up the remaining portion of the District's General Fund Revenue.

Combined General Fund Revenue



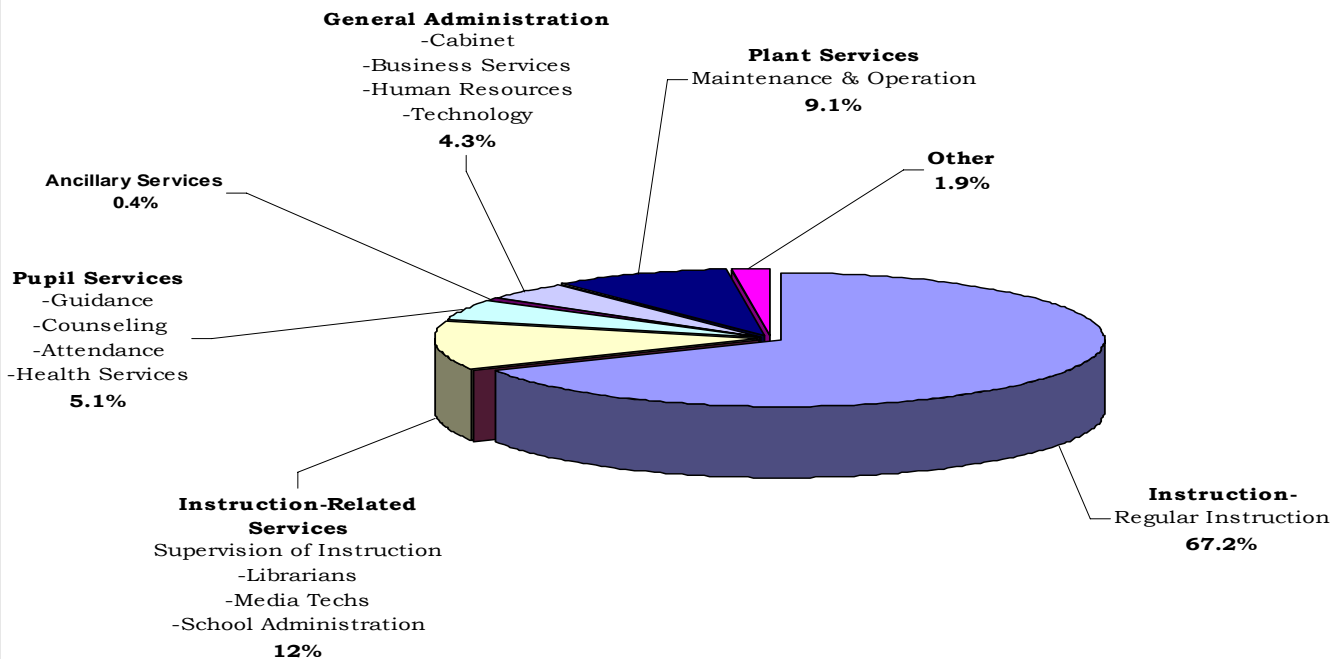
The District's total General Fund expenditure for the 2009-2010 is \$69,639,072. The majority of the General Fund budget expenditures, 81.14%, are spent on employee costs. Operating Expenses which includes utilities, copiers, postage, phone expenses and other contracted services is 10.08%. Books instructional supplies, office supplies and computer equipment 3.19%.

Combined General Fund Expenditures



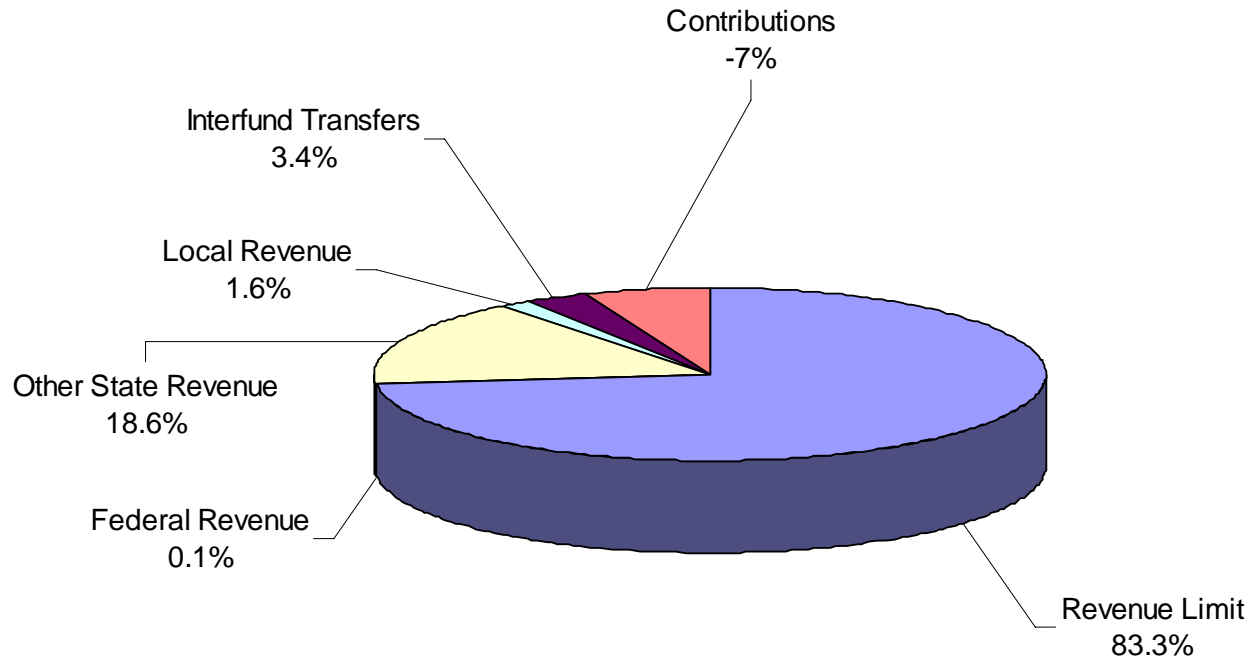
On a functional basis, the majority of General Fund combined budget expenditures, 67.2% are for Instruction. This includes employees costs and instructional supplies and services. 12% is spent for Instruction related services which includes supervision of instruction and instruction administration. 9.1% is spent for Plant Services. Plant Services includes utilities, custodial, grounds and routine maintenance. 5.1% is spent for Pupil Services which includes counseling, psychology, speech therapy, health service, and attendance. General administration is 4.3% of the total General Fund Expenditures. The remaining 2.3% is for Other Outgo and Ancillary Services.

Combined Expenditures by Function



The District's Unrestricted portion of the General Fund revenue for 2009-2010 \$49,004,907
The District's Revenue Limit generates 83.3% of the Unrestricted General Fund Revenue.
Other State Revenue is 18.6%. Local Revenue, Federal Revenue, Interfund Transfers and Contributions to Restricted Resources makes up the remaining portion of the Unrestricted General Fund Revenue.

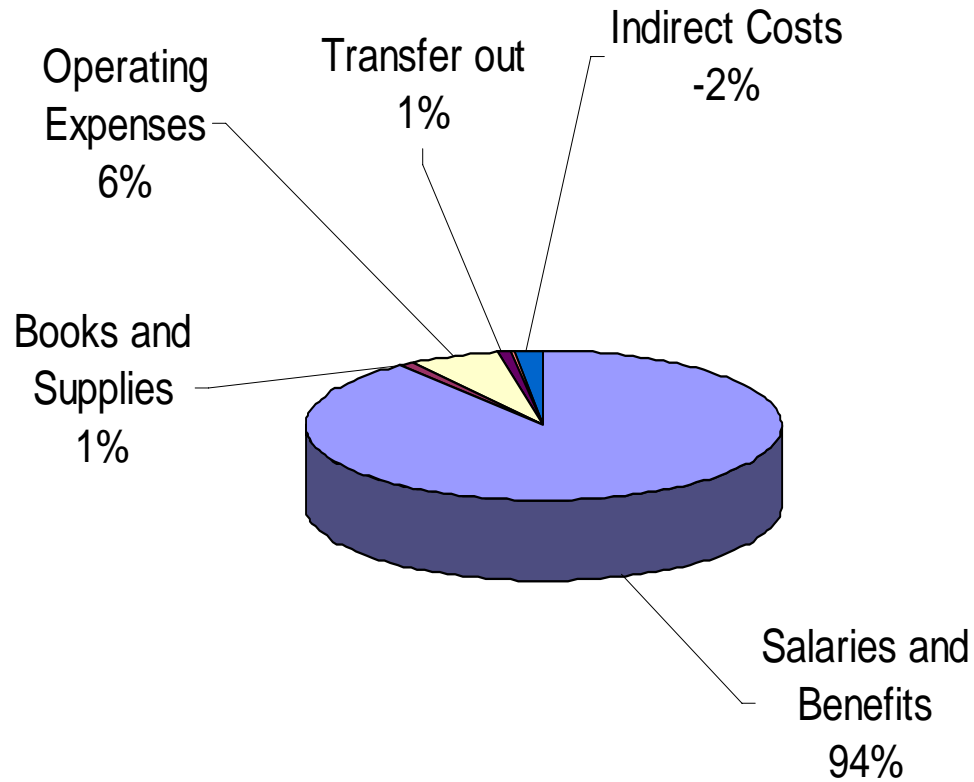
Unrestricted General Fund Revenue



Total Unrestricted General Fund Expenditures equals \$45,699,484. Majority of expenditures, 94% are spent on employee salaries and benefits.

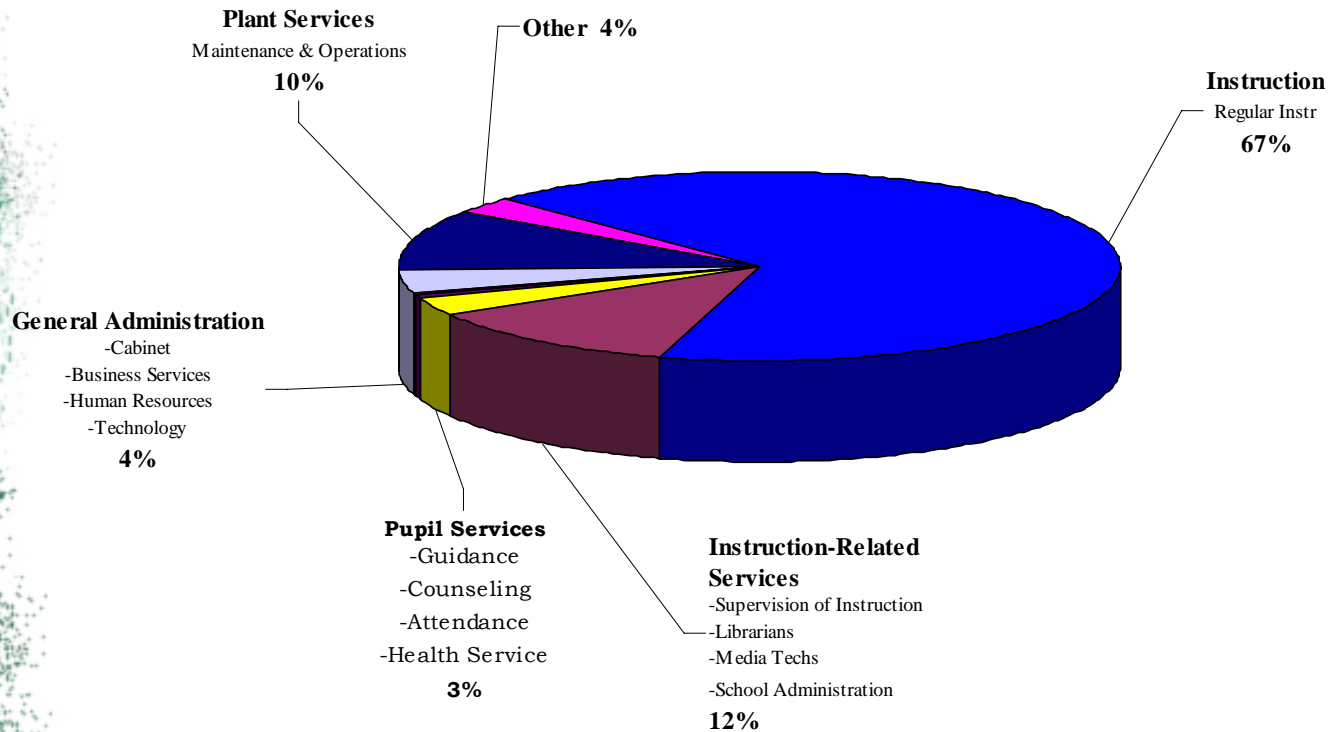
Unrestricted General Fund Expenditure

Excludes Tier III Includes Resource 3200



On Functional Basis, the majority of Unrestricted General Fund Expenditures are spent on instruction, 67%

Unrestricted General Fund Expenditures by Function



2009-2010

Unaudited Actuals Other Funds

	Adult 110	Cafet 130	Def. Mnt 140	Sp. Res 170	Bldng Fund 210	Dev Fees 250	School Fac 350	Sp. Res 400	Fund 510	Self Ins 670
	Unaudited	Unaudited	Unaudited	Unaudited	Unaudited	Unaudited	Unaudited	Unaudited	Unaudited	Unaudited
	Actual	Actual	Actual	Actual	Actual	Actual	Actual	Actual	Actual	Actual
Ending Fund Balance	2,160,263	1,054,113	674,427	2,942,777	55,676,033	703,464	4,303,906	1,834,898	5,394,771	977,975
Designations										
Zion Loan Payment	1,815,209	-	-		-					
Portables	-	-								
Stores		23,203								
Projects			-							
Mandated Costs				762,177						
Legally Restricted Balance	342							79,593		
3% Required Reserves	-			-						
Portable Loan Payment	-		-		-	-				
Portable Loan Payment						-				
Tier III Sweep	300,000.0									
VOIP						-		984,558		
Designated for Economic Uncertainty				2,089,172						
City RDA- 9th Grade Campus								695,440		
Undesignated Amount	44,712	1,030,910	674,427	91,428	55,676,033	703,464	4,303,906	75,307	5,394,771	977,975
Page	26	39	50	61	70	82	93	105	117	127

Next Steps

- Discuss Federal Jobs Bill & other fiscal related impact.

1) *Budget Advisory Committee (BAC) Meeting*

Wednesday, September 22, 2010

3:30 – 5:00 PM

2) *Finance Committee*

Tuesday, September 28, 2010

6:00 PM