



## **UNAUDITED ACTUALS**

**2011-2012**

**Song Chin-Bendib  
Assistant Superintendent  
Business & Operation**

**Board Meeting  
September 11, 2012**





## ***Mission Statement***

***The mission of the San Leandro Unified School District is to educate students to achieve and demonstrate academic excellence and become confident, collaborative and competitive in a global society, by utilizing state-of-the-art technologies and innovative teaching strategies within a well-maintained, secure learning environment, in a region rich in heritage and diverse in culture, where we value our traditions while welcoming change.***



## ***Board of Education***

***Morgan Mack-Rose, President***

***Hermy B. Almonte, Vice President***

***Carmen M. Sullivan, Clerk***

***Lance James, Member***

***Ron Carey, Member***

***Mike Katz-Lacabe, Member***

***Diana J. Prola, Member***

**LEARNING**  
TO MAKE A DIFFERENCE



**2011-2012 Unaudited Actuals is based on the reliability and accurate information received. This document represents the time and efforts of the Business Office. These individuals deserve special recognition for their work, dedication and professional talents.**

***Marites Fermin, Director of Fiscal Services***

***Farhad Sabit, Accounting Manager***

***Thea Chhay, Budget Technician***

***Dorothy Morgan-Carney, Accounting Technician***

***Karen Perez, Employee Benefits Specialist***

***Lynn Hester, Payroll Technician***

***Jennilee Ngor, Payroll Technician***

***Elizabeth Cardoso, Bond Technician***

***Juanita Oyola, Buyer***

***Marie Rivera, Purchasing Technician***

***Michael Ly, Accounts Payable Temp***

***Teresa Zumbo, Community Services***

***& Accounts Payable Technician***

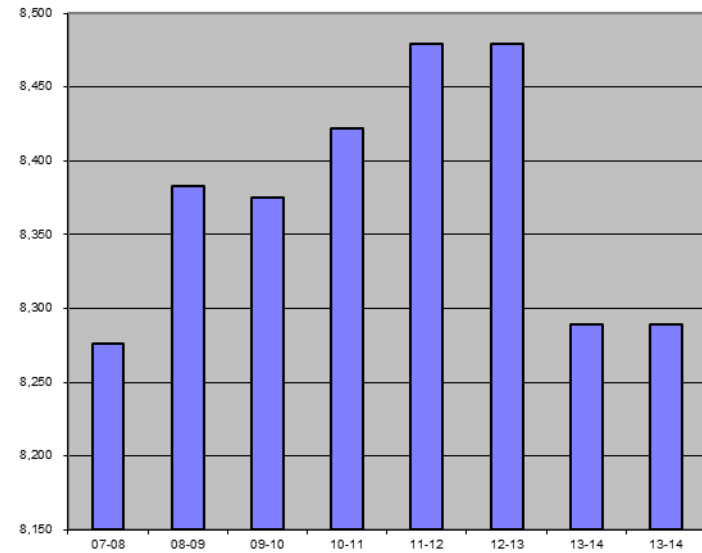
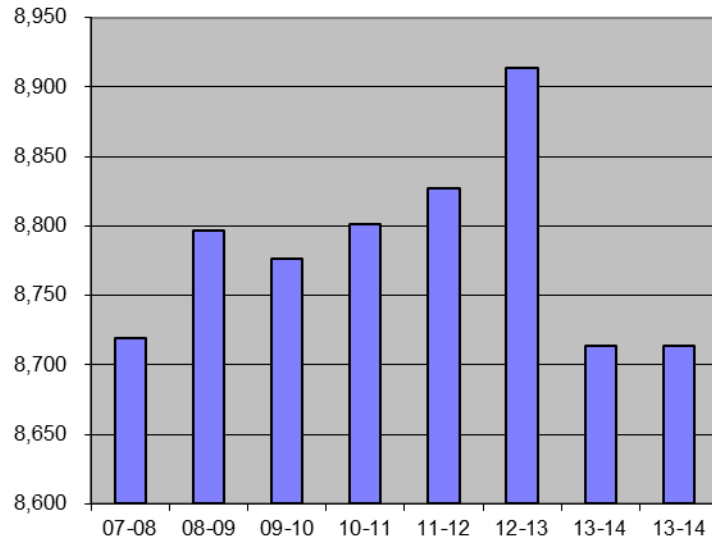
***Sukhi Khaira-Sidhu, Administrative Assistant***



# San Leandro Unified School District

## Regular Ed, SDC Students, Home Instruction & NPS

### Enrollment Based on October CBEDS and P-2 ADA



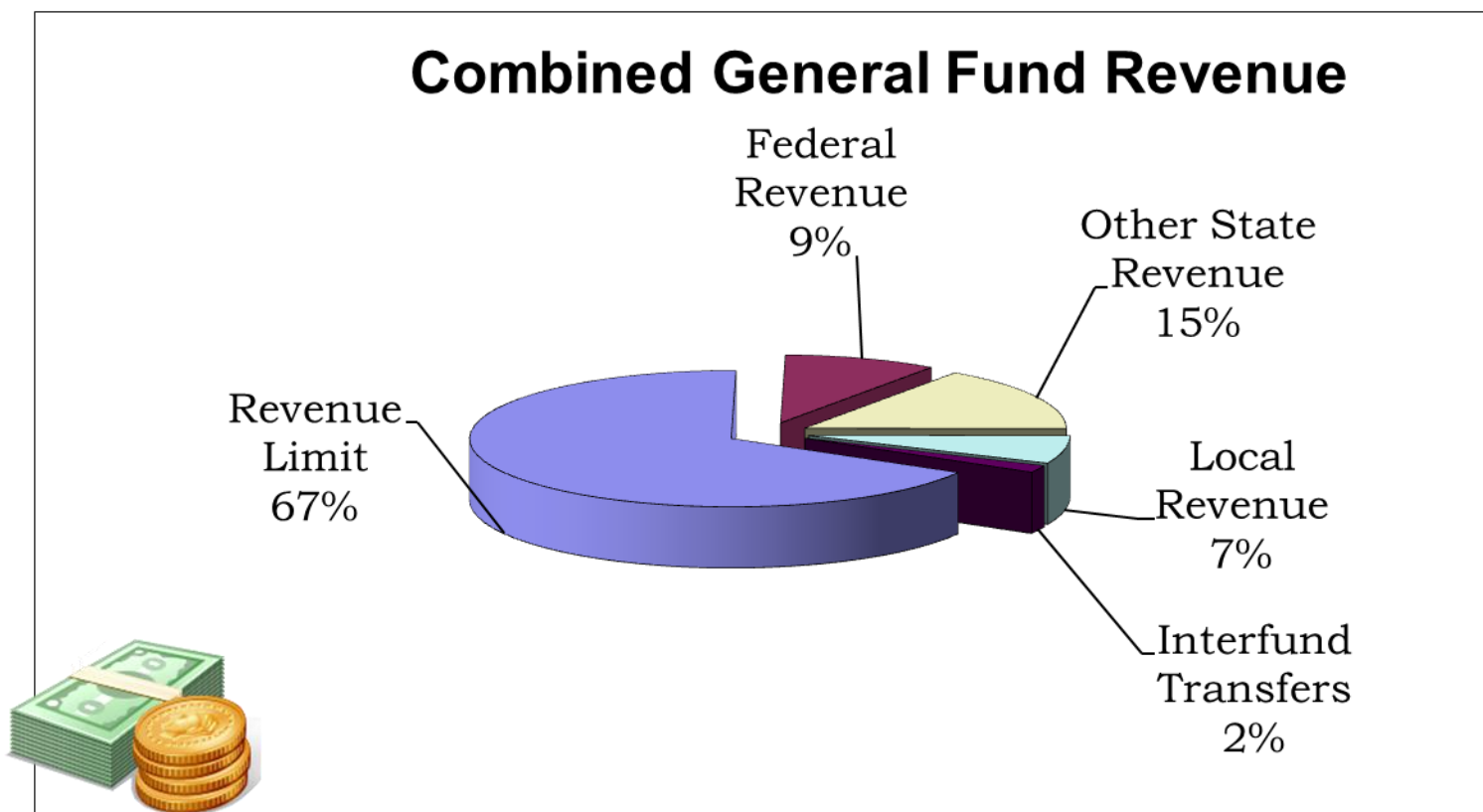
<u>Year</u>	<u>ENR</u>	<u>P-2 ADA</u>
07-08	8,719	8,276
08-09	8,797	8,383
09-10	8,776	8,375
10-11	8,801	8,422
11-12	8,827	8,479
12-13	8,914	8,479
13-14	8,714	8,289
13-14	8,714	8,289

<u>ADA TO ENROLLMENT</u>
94.92%
95.29%
95.43%
95.69%
96.06%
95.12%
95.12%
95.12%



## Where did the money come from to operate our schools?

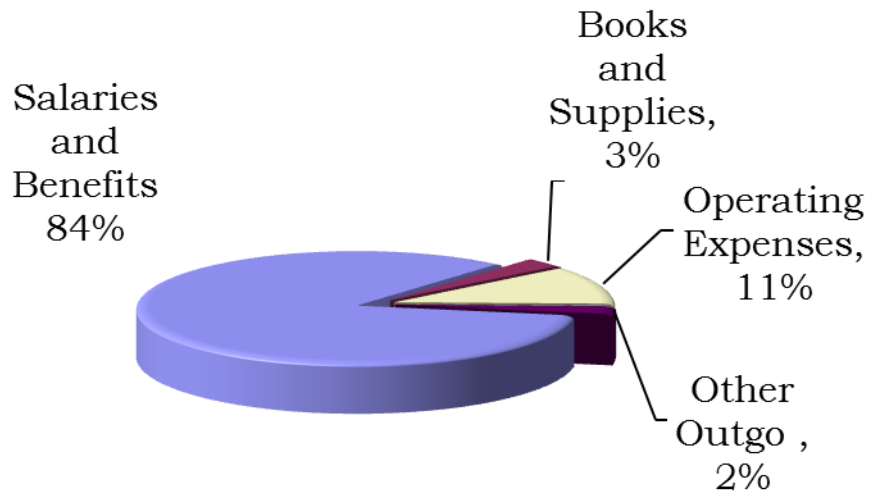
The District derived its revenues from a number of sources as shown below.





# How were the dollars spent to educate pupils in San Leandro Unified School District

## Combined General Fund Expenditures



## Combined General Fund Expenditures:

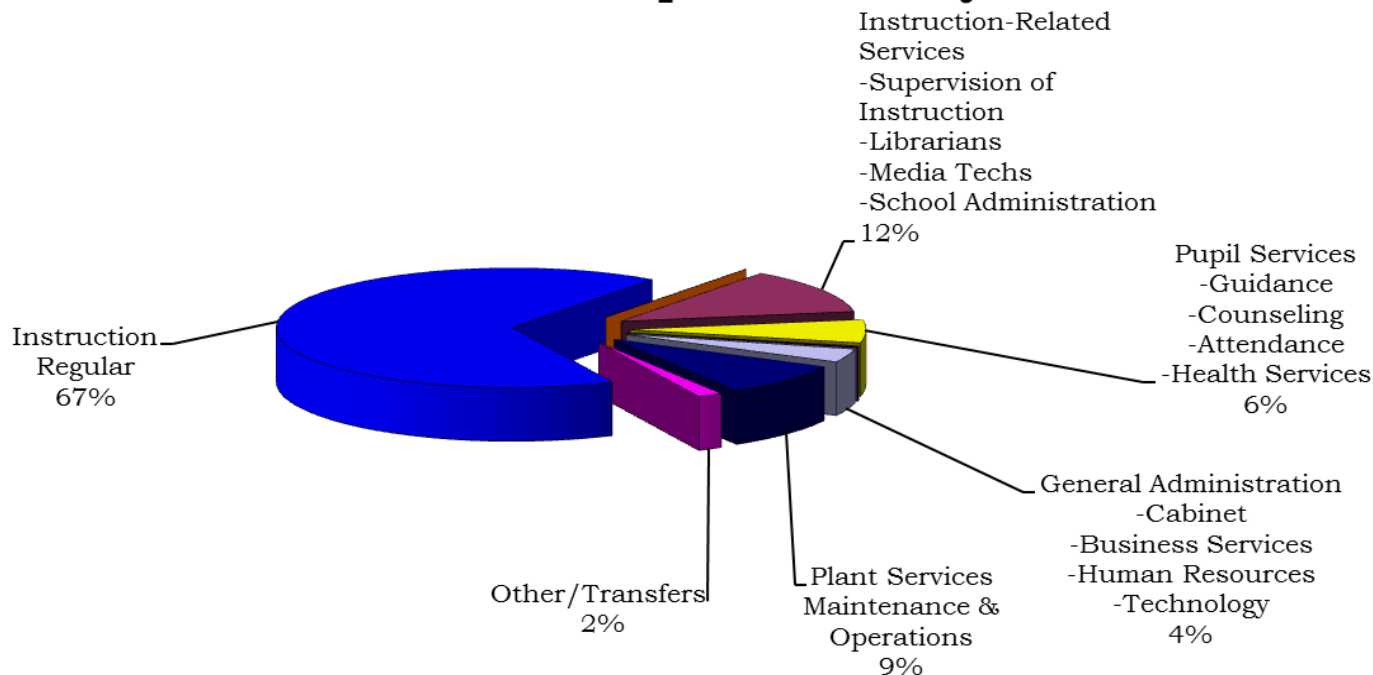
Salaries and Benefits	\$56,897,053
Books and Supplies	\$1,930,562
Operating Expenses	\$7,560,786
Other	\$55,481
Other Outgo/IC/IFT	\$1,558,055
<b>Total Expenditures</b>	<b>\$68,001,937</b>



## Based on Expenditures by Function

- 67 % of the Unrestricted General Fund Expenditures were spent for Instruction. These include salaries and benefit, instructional supplies and services.
- 12% was spent for Instruction Related services which includes supervision of instruction while 6% was spent for Pupil Services.
- Another 9% was spent for Plant services which are utilities ,custodial, grounds and routine maintenance.
- General administration accounts for 4% of the total expenditures.

### Combined Unrestricted Expenditures by Function

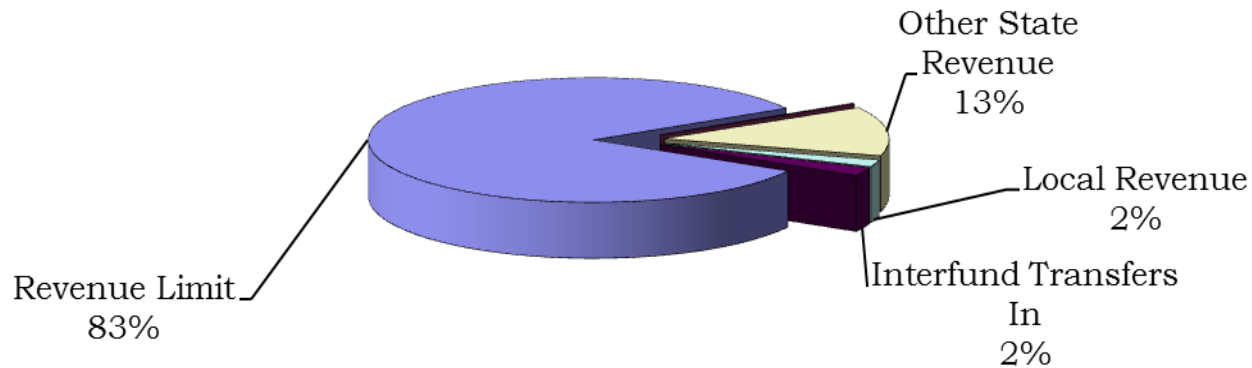






- The District Unrestricted portion of the General Fund Revenue for 2011-2012 is \$52,288,834 which includes Transfer In.
- The District Revenue Limit generated 83% of the Unrestricted General Fund Revenue while Other State Revenue accounts for 13%.
- Both of these sources are determined by the state funding and together they account 96% of the District's Unrestricted General Fund Revenue.
- Local Revenue and Interfund Transfer makes up the remaining portion of the Revenue.

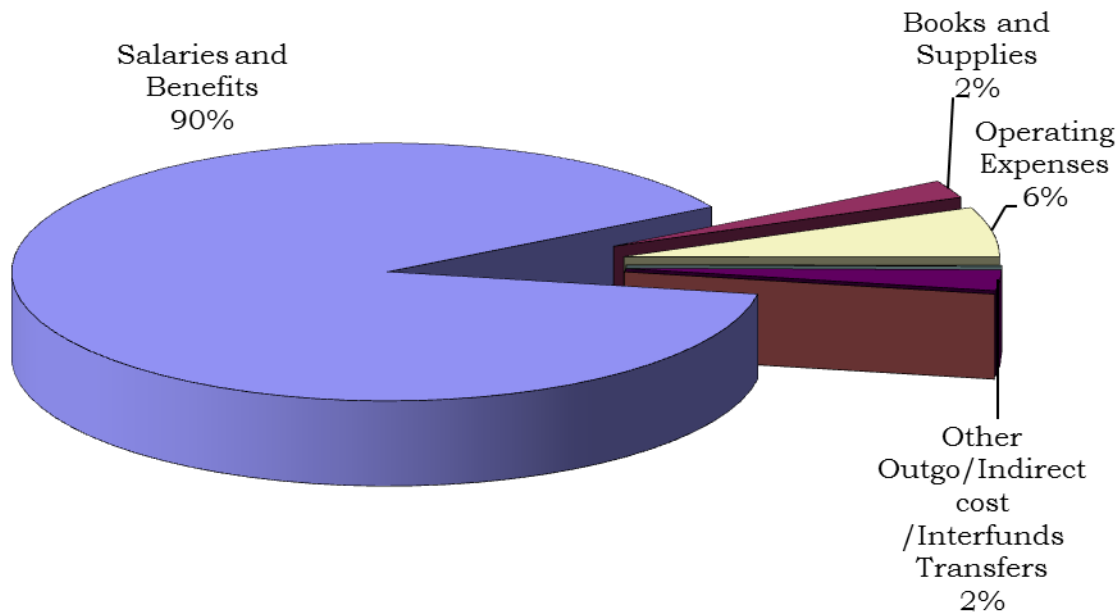
## Unrestricted General Fund Revenue





- Total Unrestricted General Fund Expenditures equals \$40,640,713.
- Majority of the unrestricted General Fund Expenditures were allocated to salaries and benefits. Operating Expenses account for 6% of the expenditures while 2 % were spent for Books and Supplies.

### Unrestricted General Fund Expenditure

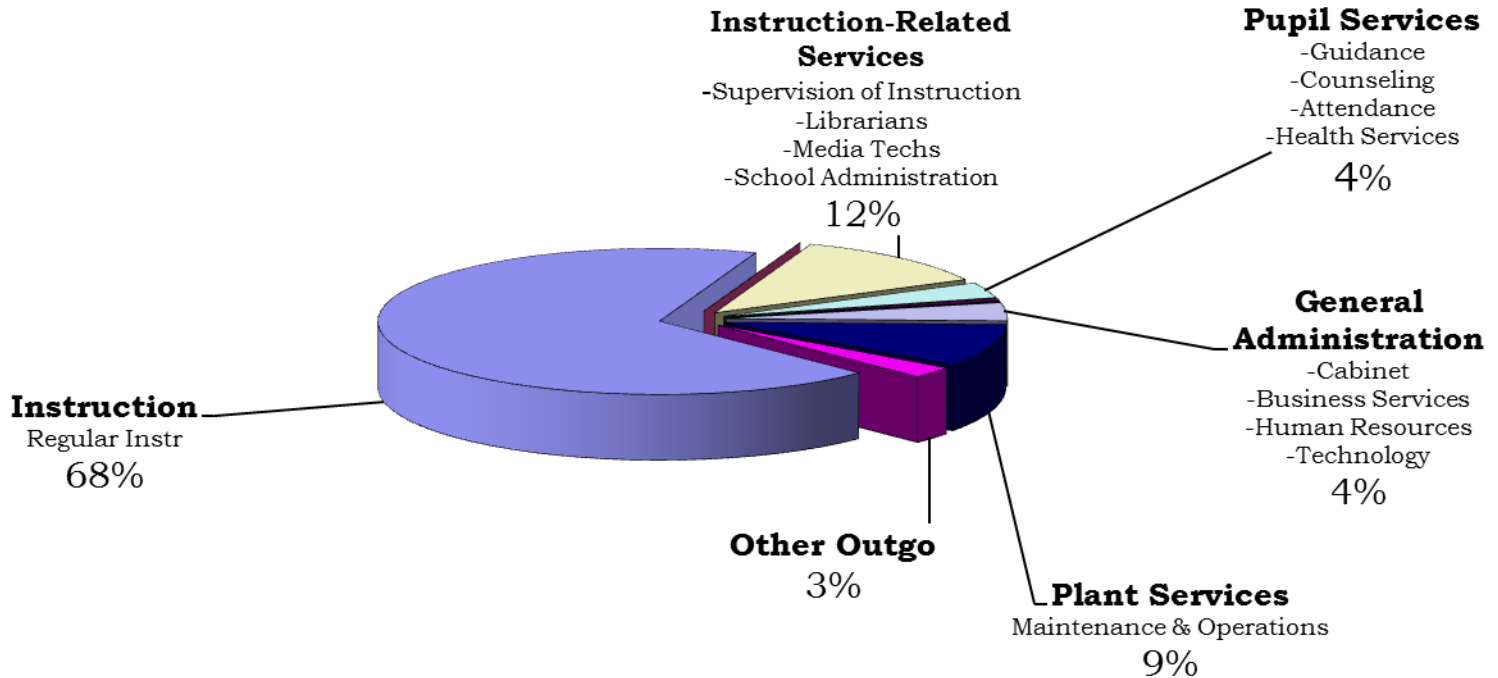


General Fund Expenditures:	Unrestricted
Salaries and Benefits	\$36,083,956
Books and Supplies	\$900,503
Operating Expenses	\$2,552,013
Capital/Other	\$45,944
Other Outgo/IC/IFT	\$1,058,298
<b>Total Expenditures</b>	<b>\$40,640,713</b>



- Based on Expenditures by Function: 68% was spent for Instruction.
- While 12% was spent for Instruction Related Services and 4% was spent for Pupil Services.
- Plant services which are utilities, custodial, grounds and routine maintenance account for 9%.
- General administration was 4%.

## Unrestricted General Fund Expenditures by Function





# San Leandro Unified School District Unaudited Actuals 2011-2012

	<b>Adult 110</b>	<b>Cafet 130</b>	<b>Def. Mnt 140</b>	<b>Sp. Res 170</b>	<b>Bldg Fund 210&amp;211</b>	<b>Dev. Fees 250</b>	<b>School Fac 350</b>	<b>Sp. Res 400</b>	<b>Inst 510</b>	<b>Self Ins 670</b>
	<b>Budget</b>	<b>Budget</b>	<b>Budget</b>	<b>Budget</b>	<b>Budget</b>	<b>Budget</b>	<b>Budget</b>	<b>Budget</b>	<b>Budget</b>	<b>Budget</b>
<b>Beginning Balance</b>	<b>2,162,971</b>	<b>1,082,400</b>	<b>637,711</b>	<b>2,958,770</b>	<b>64,156,102</b>	<b>1,086,304</b>	<b>296,208</b>	<b>1,347,668</b>	<b>5,901,443</b>	<b>994,149</b>
Revenue Limit	-	-	-	-	-	-	-	-	-	-
Federal Sources	332,671	2,399,064	-	-	-	-	-	-	-	-
State Sources	1,783,666	199,075	330,572	-	-	-	787,454	474,648	94,279	-
Local Sources	204,069	589,918	2,366	12,383	262,765	655,533	2,494	464,341	9,870,300	1,431,992
<b>Total Revenues</b>	<b>2,320,405</b>	<b>3,188,057</b>	<b>332,938</b>	<b>12,383</b>	<b>262,765</b>	<b>655,533</b>	<b>789,948</b>	<b>938,989</b>	<b>9,964,579</b>	<b>1,431,992</b>
Certificated Salaries	906,608	-	-	-	-	-	-	-	-	-
Classified Salaries	289,834	973,768	-	-	379,332	-	-	-	-	-
Employee Benefits	252,461	272,507	-	-	94,876	-	-	-	-	-
Books and Supplies	181,667	1,596,983	-	-	39,706	-	-	1,000	-	34,515
Services and Other Operating	361,618	113,045	51,936	-	190,956	154,559	1,991	75,154	-	1,938,744
Capital Outlay	16,384	14,579	97,066	-	15,232,927	50,000	810,590	43,214	-	-
Other Outgo *	101,485	-	-	-	-	211,730	-	492,228	9,634,269	-
Indirect Costs	38,518	98,740	-	-	-	-	-	-	-	-
<b>Total Expenditures</b>	<b>2,148,574</b>	<b>3,069,623</b>	<b>149,003</b>	<b>-</b>	<b>15,937,797</b>	<b>416,289</b>	<b>812,581</b>	<b>611,597</b>	<b>9,634,269</b>	<b>1,973,259</b>
<b>Excess (Deficiency)</b>	<b>171,831</b>	<b>118,434</b>	<b>183,935</b>	<b>12,383</b>	<b>(15,675,032)</b>	<b>239,244</b>	<b>(22,632)</b>	<b>327,393</b>	<b>330,310</b>	<b>(541,268)</b>
Transfers In	-	-	-	-	129,369	-	-	-	7,700,579	538,501
Transfers Out	470,000	-	660,572	-	-	-	-	-	7,150,000	-
<b>Net Increase/Decrease</b>	<b>(298,169)</b>	<b>118,434</b>	<b>(476,637)</b>	<b>12,383</b>	<b>(15,545,663)</b>	<b>239,244</b>	<b>(22,632)</b>	<b>327,393</b>	<b>880,889</b>	<b>(2,767)</b>
<b>Ending Fund Balance</b>	<b>1,864,802</b>	<b>1,200,834</b>	<b>161,074</b>	<b>2,971,153</b>	<b>48,610,439</b>	<b>1,325,548</b>	<b>273,575</b>	<b>1,675,061</b>	<b>6,782,332</b>	<b>991,382</b>
<b>Sweep to GF 2013-14</b>										
<b>Contribution to UGF to balance budget 2012-13</b>	300,000									
<b>Contribution to UGF to balance budget 2013-14</b>										
<b>Mandated Cost to UGF to balance budget 2013-14</b>				762,117						478,000
<b>3% Reserve for Economic Uncertainty</b>				2,209,036						
<b>Zion Loans</b>	1,486,783									
<b>Medical Billing &amp; Coding/ C N A</b>	78,019									
<b>Debt Services COP's</b>										
<b>City of SL RDA</b>								1,182,512		
<b>Portables/RDA/Dev Fees</b>						266,308		492,549		
<b>Stores</b>		32,092								
<b>Science Wing State Match</b>							164,268			
<b>Measure B and M Projects</b>					22,544,242					
<b>Various RRM District Wide</b>			161,074							
<b>Restricted Committed</b>	-	1,168,742			26,066,197	1,059,240	109,307		6,782,332	
<b>Other Assignment</b>										513,382
<b>Ending Fund Balance</b>	<b>-</b>	<b>0</b>	<b>-</b>	<b>-</b>	<b>-</b>	<b>0</b>	<b>-</b>	<b>-</b>	<b>-</b>	<b>0</b>